



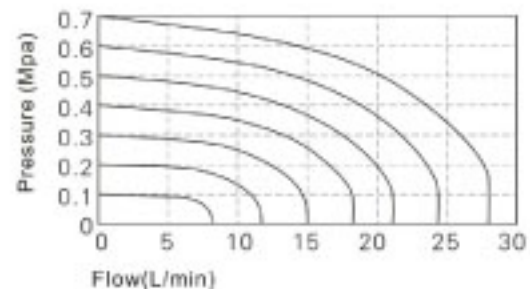
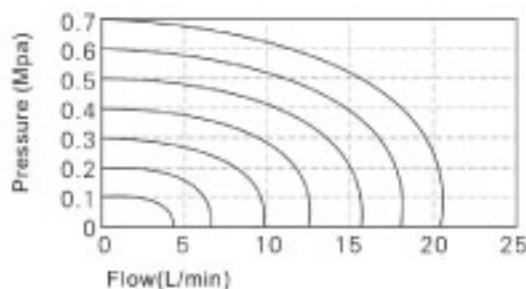
XY-10A



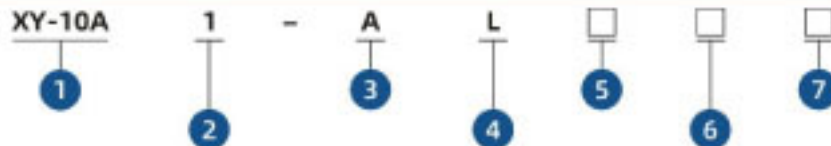
INSTALL AND OPERATION

1. It is recommended that the user unit specially-assigned person to be responsible for the use and maintenance.
2. When the valve is not used for a long time, it shall be stored in a dry place. After the solenoid valve is installed, the medium must be input for several times, and it can be put into formal use only after it is confirmed to be normal.
3. Before use, pay attention to check whether the components are damaged during transportation. During operation, the working pressure shall not exceed the rated pressure, and the working differential pressure must be within the range of the rated differential pressure. When the working pressure exceeds the rated pressure or the working differential pressure exceeds the rated differential pressure, the micro solenoid valve shall be stopped.
4. Please pay attention to the media flow direction during installation.
5. Please pay attention to dust prevention. When it is removed and not in use, install dust plugs at the inlet and outlet.

FLOW CHARACTERISTICS



ORDERING CODE



1. Model Series
XY-10A
2. Working Type
1:3/2 NC
2:3/2 NO
3:2/2 NC

3. Voltage
A : AC220V
B : DC24V
C : AC110V
D : DC12V
4. Connection Type
L : Vertical type
M : Parallel type
N : Vertical parallel universal
P : Pin type

5. Indicator light, surge voltage protection circuit
Blank : With indicator light and no surge voltage protection circuit
R : With indicator light and surge voltage protection circuit
Z : No indicator light, no surge voltage protection circuit
U : No indicator light, with surge voltage protection circuit
*Pin type without indicator

6. Exhaust Type
Blank : Exhaust Directly
N : Indirect Exhaust
7. Manual Lever Mode
Blank : With Manual Lever
1 : Without Manual Lever

SPECIFICATION

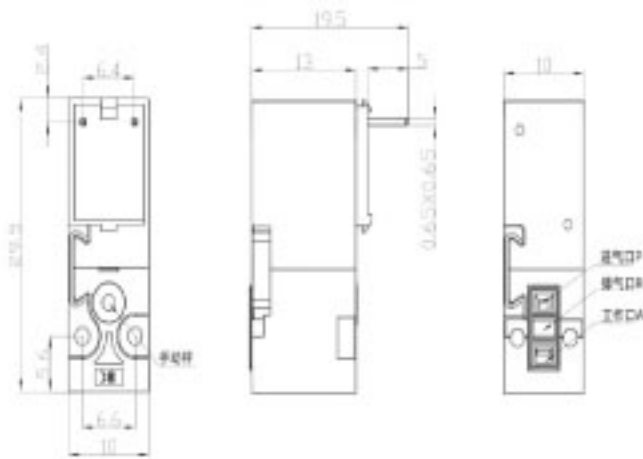
Working Medium	Compressed Air (filtered by 40µm filter screen)
Type	3/2
Working Type	Direct Action
Orifice	0.7mm
Working Pressure	0-0.7MPa
Working Temp.	-5~50℃
Voltage	DC12V, DC24V, AC110V, AC220V
Protection Class	IP65
Insulation Class	H
Body Material	PA66
Seal Material	NBR

FEATURES

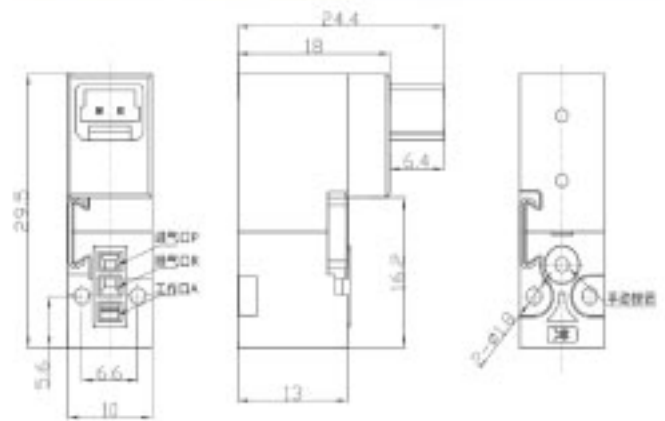
1. It is equipped with surge elimination device to protect against overvoltage.
2. The DC circuit is designed with non-polar input, and the terminal line can be adjusted freely according to the installation and whole line requirements. The general mode of vertical / parallel / vertical parallel is adopted.
3. Bridge rectifier full wave rectification to reduce the problem of AC power supply buzzer.
4. Various voltage specifications are available: AC220V, AC110V, DC24V, DC12V.
5. Low starting voltage and long service life.



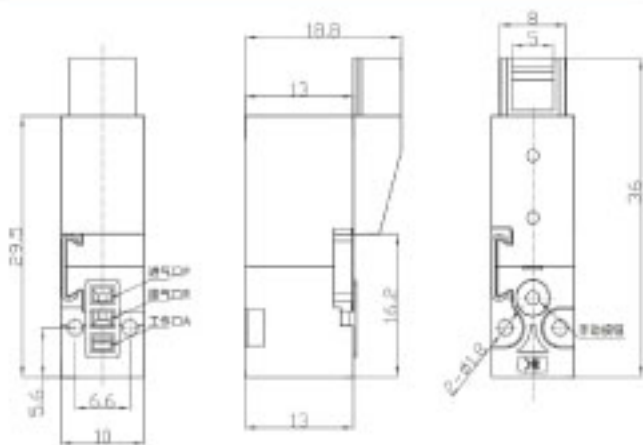
XY-10A(PIN TYPE)



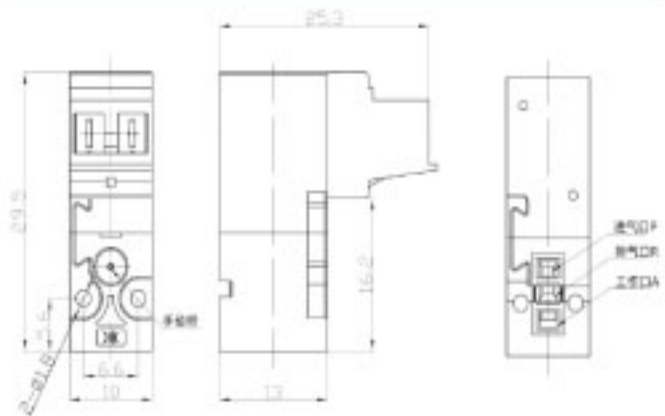
XY-10A(Vertical Type)



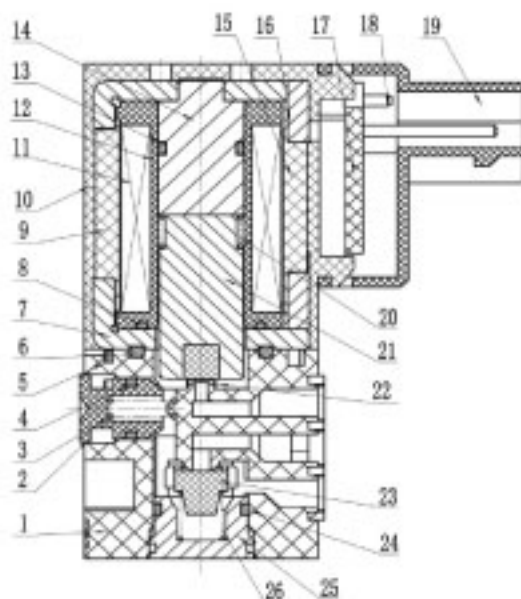
XY-10A (Parallel type)



XY-10A (Vertical parallel universal)



XY-10A (Profile)



No.	Description	Mat.	No.	Description	Mat.
1	Valve Body	Resin	16	Bracket Side plate	Carbon steel
2	Manual Lever	POM	17	PCB board	
3	Manual Lever Spring	S.S	18	Pin	Brass
4	O-ring	NBR	19	Housing	PC
5	Manual Lever Card	S.S	20	Spring	S.S
6	O-ring	NBR	21	Plunger	Electromagnetic stainless steel
7	Bracket	Carbon steel	22	Ejector rod	POM
8	O-ring	NBR	23	Plug	NBR
9	Shim	Nylon	24	O-ring	NBR
10	Encapsulation	Nylon	25	Bottom cover	Brass
11	Copper Wire		26	Spring	S.S
12	Bobbin	POM	27		
13	O-ring	NBR	28		
14	Iron core	Electromagnetic stainless steel	29		
15	Shim	Nylon	30		