



## ISO Standards

### Air Cylinder: Non-rotating Rod Double Acting, Single Rod

# C85K Series

ø8, ø10, ø12, ø16, ø20, ø25



### How to Order

**Double acting, Single rod** **C D 85K N 20 - 40 L V - B - M9BW S -**

**Built-in magnet**

Nil	None
D	Built-in magnet

**Head cover type**

N	Basic (Integrated clevis)
E	Double end boss-cut
F	Boss-cut/Basic
Y	Head cover axial port

**Applicable head cover**

Action	Head cover type			
	N	E	F	Y
Rubber bumper	●	●	●	●

**Bore size**

8	8 mm
10	10 mm
12	12 mm
16	16 mm
20	20 mm
25	25 mm

**Cylinder stroke [mm]**  
Refer to the next page for standard strokes.

**Auto switch mounting type**

A	Rail mounting
B	Band mounting

**Accessory**

Nil	None
V	Rod end
W	Double knuckle joint

**Auto switch**

Nil	Without auto switch
-----	---------------------

**Number of auto switches**

Nil	2
S	1
n	n

**Mounting bracket**

Nil	None
L	Single foot
M	Double foot
G	Flange
U	Trunnion
N	Clevis

**Applicable mounting bracket**

Action	Head cover type	Mounting bracket				
		L	M	G	U	N
Rubber bumper	N	●	●	●	●	●
	E	●	●	●	●	—
	F	●	—	●	●	—
	Y	●	—	●	●	—

Made to order

### Applicable Auto Switches

Type	Special function	Electrical entry	Indicator light	Wiring (Output)	Load voltage		Auto switch model				Lead wire length [m]					Pre-wired connector	Applicable load	
					DC	AC	Band mounting		Rail mounting		0.5 (Nil)	1 (M)	3 (L)	5 (Z)	None (N)			
							Perpendicular	In-line	Perpendicular	In-line								
Solid state auto switch	—	Grommet	No	3-wire (NPN)	5 V, 12 V	—	M9NV	M9N	M9NV	M9N	●	●	●	○	—	○	IC circuit	
				3-wire (PNP)			M9PV	M9P	M9PV	M9P	●	●	●	○	—	○		
		Connector	2-wire	M9BV			M9B	M9BV	M9B	●	●	●	○	—	○			
			—	H7C			J79C	—	—	●	—	●	—	—	—			
	Diagnostic indication (2-color indicator)	Grommet	Yes	3-wire (NPN)	5 V, 12 V	—	M9NVV	M9NW	M9NVV	M9NW	●	●	●	○	—	○	IC circuit	
				3-wire (PNP)			M9PVV	M9PW	M9PVV	M9PW	●	●	●	○	—	○		
		Connector	2-wire	M9BVV			M9BW	M9BVV	M9BW	●	●	●	○	—	○			
			—	M9NAV			M9NA	M9NAV	M9NA	○	○	●	○	—	○			
	Water-resistant (2-color indicator)	Grommet	No	3-wire (NPN)	5 V, 12 V	—	M9PAV	M9PA	M9PAV	M9PA	○	○	●	○	—	○	IC circuit	
				3-wire (PNP)			M9BAV	M9BA	M9BAV	M9BA	○	○	●	○	—	○		
With diagnostic output (2-color indicator)	Grommet	Yes	2-wire	12 V	—	—	H7NF	—	F79F	○	○	●	○	—	○	IC circuit		
			4-wire (NPN)			—	—	—	—	—	—	—	—	—	—			
Reed auto switch	—	Grommet	Yes	3-wire (NPN equivalent)	5 V	—	A96V	A96	A96V	A96	●	—	●	—	—	—	IC circuit	
				2-wire			—	—	A72	A72H	●	—	●	—	—	—		
							—	200 V	—	—	—	—	—	—	—	—		—
		Connector	No	2-wire	24 V	12 V	—	100 V	A93V	A93	A93V	A93	●	●	●	●	—	IC circuit
								100 V or less	A90V	A90	A90V	A90	●	—	●	—	—	
		Grommet	Yes	2-wire	24 V	—	—	—	C73C	A73C	—	—	●	—	●	—	—	IC circuit
								24 V or less	—	C80C	A80C	—	—	●	—	●	—	
Diagnostic indication (2-color indicator)	Grommet	Yes	—	—	—	—	—	A79W	—	—	●	—	●	—	—	—		

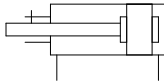


ISO Standards Air Cylinder: Non-rotating Rod Double Acting, Single Rod **C85K Series**



**Symbol**

Rubber bumper



**Specifications**

Bore size [mm]	8	10	12	16	20	25
Type	Pneumatic					
Action	Double acting, Single rod					
Fluid	Air					
Proof pressure	1.5 MPa					
Max. operating pressure	1.0 MPa					
Min. operating pressure	0.1 MPa	0.08 MPa			0.05 MPa	
Ambient and fluid temperature	Without auto switch: -20°C to 80°C (No freezing)					
	With auto switch: -10°C to 60°C (No freezing)					
Lubricant	Not required (Non-lube)					
Stroke length tolerance	$^{+1.0}_0$ mm				$^{+1.4}_0$ mm	
Piston speed	50 to 1500 mm/s					
Cushion	Rubber bumper					
Allowable kinetic energy	0.02 J	0.03 J	0.04 J	0.09 J	0.27 J	0.4 J
Non-rotating accuracy	$\pm 1.5^\circ$		$\pm 1^\circ$		$\pm 0.7^\circ$	

**Standard Strokes**

Bore size [mm]	Standard stroke [mm]	Max. stroke [mm]
8	10, 25, 40, 50, 80, 100	100
10		
12	10, 25, 40, 50, 80, 100, 125, 160, 200	200
16		
20		
25	10, 25, 40, 50, 80, 100, 125, 160, 200, 250, 300	1000



## C85K Series

### Mounting Brackets/Accessories

Mounting bracket/ Accessory	Standard (mounted to the body)		Mounting bracket (shipped together)								Accessory (shipped together)	
	Mounting nut	Rod end nut	Mounting nut	Foot	Flange	Trunnion	Clevis pivot bracket	Clevis pin	Pin retaining ring	Rod end	Double knuckle joint	
Mounting bracket symbol	L Single foot	● (1 pc.)	● (1 pc.)	—	● (1 pc.)	—	—	—	—	—	—	—
	M Double foot	● (1 pc.)	● (1 pc.)	● (1 pc.)	● (2 pcs.)	—	—	—	—	—	—	—
	G Flange	● (1 pc.)	● (1 pc.)	—	—	● (1 pc.)	—	—	—	—	—	—
	U Trunnion	● (1 pc.)	● (1 pc.)	—	—	—	● (1 pc.)	—	—	—	—	—
	N Clevis	● (1 pc.)	● (1 pc.)	—	—	—	—	● (1 pc.)	● (1 pc.)	● (2 pcs.)	—	—
Accessory symbol	V Rod end	● (1 pc.)	● (1 pc.)	—	—	—	—	—	—	—	● (1 pc.)	—
	W Double knuckle joint	● (1 pc.)	● (1 pc.)	—	—	—	—	—	—	—	—	● (1 pc.)

### Mounting Bracket/Accessory Part Nos.

Mounting bracket/Accessory	Bore size [mm]						Contents	
	8	10	12	16	20	25		
Mounting bracket	Rod end nut	C85NT10		C85NT16		C85NT20	C85NT25	1 rod end nut
	Mounting nut	C85SN10		C85SN16		C85SN25		1 mounting nut
	Foot (1 pc.)	C85L10A		C85L16A		C85L25A		1 foot bracket
	Foot (2 pcs. with 1 mounting nut)	C85L10B		C85L16B		C85L25B		2 foot brackets, 1 mounting nut
	Foot (1 pc. with 1 mounting nut)	C85L10C		C85L16C		C85L25C		1 foot bracket, 1 mounting nut
	Flange	C85F10		C85F16		C85F25		1 flange
	Trunnion	C85T10		C85T16		C85T25		1 trunnion
	Clevis	C85C10		C85C16		C85C25		1 clevis pivot bracket, 1 clevis pin, 2 pin retaining rings
Accessory	Rod end	KJ4D		KJ6D		KJ8D	KJ10D	1 rod end
	Double knuckle joint	GKM4-8		GKM6-12		GKM8-16	GKM10-20	1 double knuckle joint
	Floating joint	JA10-4-070		JA15-6-100		JA20-8-125	JA30-10-125	1 floating joint

### Replacement Parts: For Non-rotating Rod Type (K)

Bore size [mm]	Part no.	Note
20	C85K-20PS	Every set includes: 1 rod seal 1 flat washer 1 retaining ring
25	C85K-25PS	

### Weights

Bore size [mm]		8	10	12	16	20	25	
Basic weight	Without magnet	C85KN	39	41	82	95	189	257
		C85KE	41	43	86	98	194	262
		C85KF	37	39	77	85	174	240
		C85KY	37	39	77	85	175	241
	With magnet	CD85KN	39	41	83	95	193	261
		CD85KE	41	43	86	99	198	266
		CD85KF	37	39	77	85	178	244
		CD85KY	37	39	78	85	178	245
Additional weight per 10 mm of stroke		2.3	2.5	4.5	5.5	8.7	12.2	
Mounting bracket	Foot (1 pc.)	C85L□A	20		40		95	
	Foot (2 pcs. with 1 mounting nut)	C85L□B	55		105		210	
	Flange	C85F□	12		25		90	
	Trunnion	C85T□	20		50		75	
	Clevis	C85C□	20		40		85	
Accessory	Rod end	KJ□D	17		25		45 70	
	Double knuckle joint	GKM□-□	10		20		50 100	
	Floating joint	JA□-□-□	10		20		50 70	

[g]

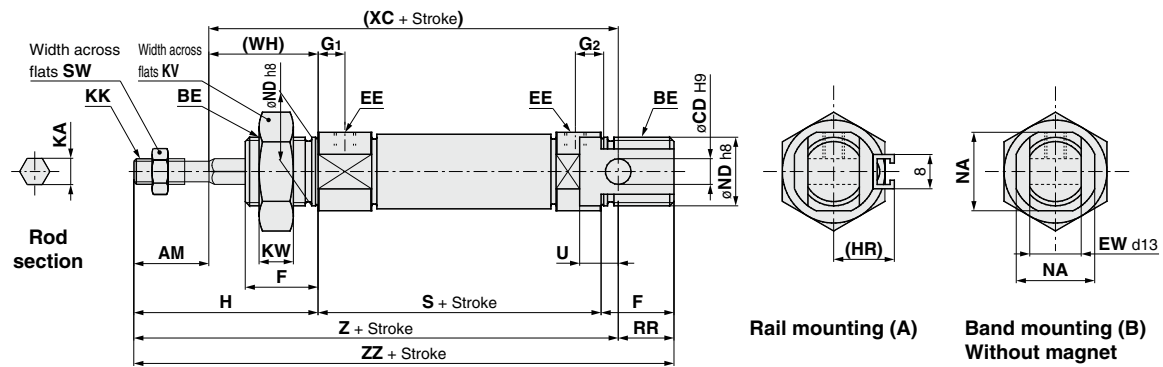


ISO Standards Air Cylinder: Non-rotating Rod Double Acting, Single Rod **C85K Series**

## Dimensions

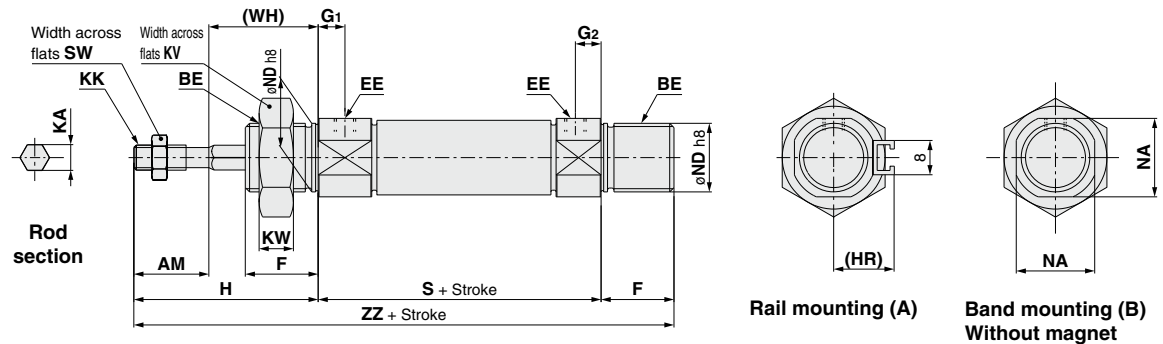
### Basic (Integrated clevis)

Rubber bumper: C□85KN Bore size - Stroke - □



### Double end boss-cut

Rubber bumper: C□85KE Bore size - Stroke - □



## Dimensions

[mm]

Bore size	AM	BE	CD	EE	EW	F	G <sub>1</sub>	G <sub>2</sub>	H	(HR)	KA	KK	KV	KW	NA	ND	RR	S	SW	U	(WH)	(XC)	Z	ZZ
8	12	M12 x 1.25	4	M5 x 0.8	8	12	7	5	28	13.4	4.2	M4 x 0.7	19	6	15	12	10	46	7	6	16	64	76	86
10	12	M12 x 1.25	4	M5 x 0.8	8	12	7	5	28	14.2	4.2	M4 x 0.7	19	6	15	12	10	46	7	6	16	64	76	86
12	16	M16 x 1.5	6	M5 x 0.8	12	17	8	6	38	14.2	6.2	M6 x 1	24	8	18.3	16	14	50	10	9	22	75	91	105
16	16	M16 x 1.5	6	M5 x 0.8	12	17	8	6	38	14.2	6.2	M6 x 1	24	8	18.3	16	13	56	10	9	22	82	98	111
20	20	M22 x 1.5	8	G1/8	16	20	8	8	44	17	8.2	M8 x 1.25	32	11	24	22	11	62	13	12	24	95	115	126
25	22	M22 x 1.5	8	G1/8	16	22	8	8	50	20	10.2	M10 x 1.25	32	11	30	22	11	65	17	12	28	104	126	137



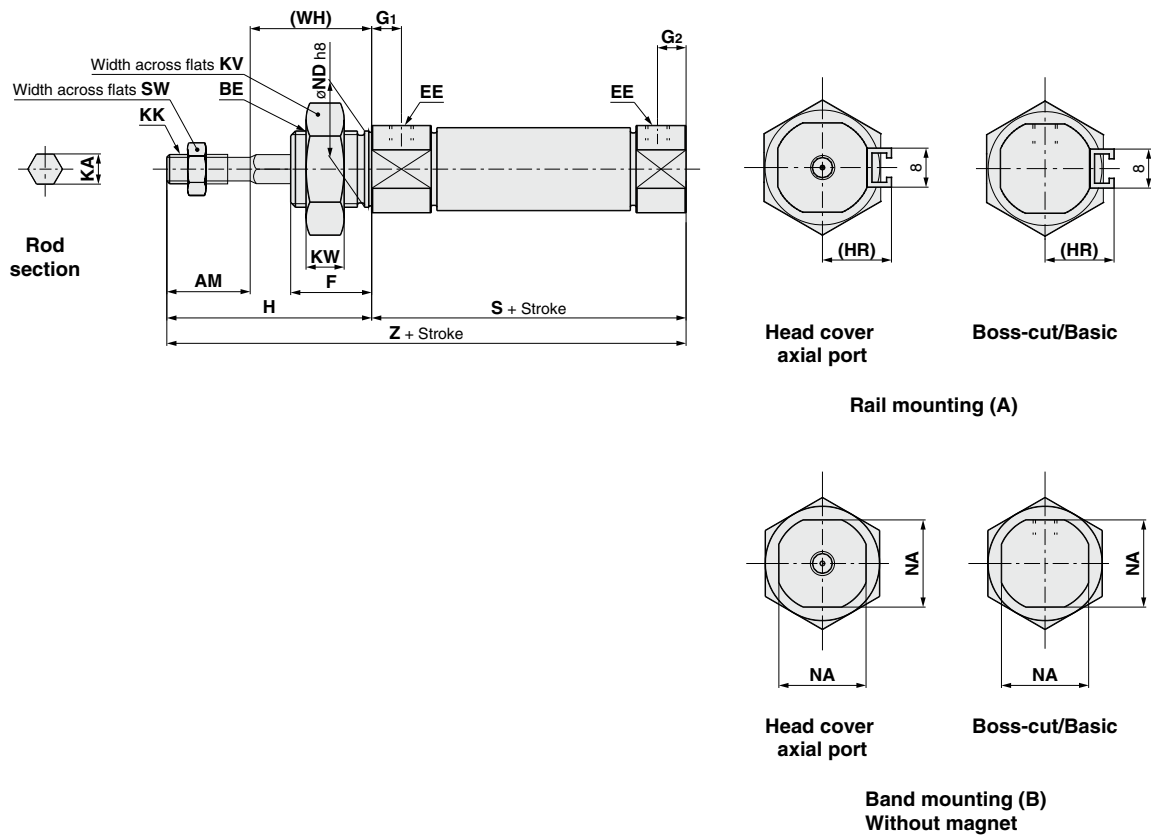
## C85K Series

### Dimensions

Boss-cut/Basic, Head cover axial port

Rubber bumper: C□85KF/Y Bore size - Stroke - □

Without magnet/Built-in magnet



### Dimensions

[mm]

Bore size	AM	BE	EE	F	G <sub>1</sub>	G <sub>2</sub>	H	(HR)	KA	KK	KV	KW	NA	ND	S	SW	(WH)	Z
8	12	M12 x 1.25	M5 x 0.8	12	7	5	28	13.4	4.2	M4 x 0.7	19	6	15	12	46	7	16	74
10	12	M12 x 1.25	M5 x 0.8	12	7	5	28	14.2	4.2	M4 x 0.7	19	6	15	12	46	7	16	74
12	16	M16 x 1.5	M5 x 0.8	17	8	6	38	14.2	6.2	M6 x 1	24	8	18.3	16	50	10	22	88
16	16	M16 x 1.5	M5 x 0.8	17	8	6	38	14.2	6.2	M6 x 1	24	8	18.3	16	50	10	22	88
20	20	M22 x 1.5	G1/8	20	8	8	44	17	8.2	M8 x 1.25	32	11	24	22	62	13	24	106
25	22	M22 x 1.5	G1/8	22	8	8	50	20	10.2	M10 x 1.25	32	11	30	22	65	17	28	115



## ISO Standards

### Air Cylinder: Non-rotating Rod Single Acting, Spring Return/Extend

# C85K Series

ø8, ø10, ø12, ø16, ø20, ø25



### How to Order

Single acting, Spring return/extend **C D 85K N 20-40 S L V-B-M9BW S**

**Built-in magnet**

Nil	None
D	Built-in magnet

**Head cover type**

N	Basic (Integrated clevis)
E	Double end boss-cut
F	Boss-cut/Basic
Y	Head cover axial port

**Applicable head cover**

Action	Head cover type			
	N	E	F	Y
Single acting, Spring return	●	●	●	●
Single acting, Spring extend	●	●	●	—

**Bore size**

8	8 mm
10	10 mm
12	12 mm
16	16 mm
20	20 mm
25	25 mm

**Cylinder stroke [mm]**  
Refer to the next page for standard strokes.

**Action**

S	Single acting, Spring return
T	Single acting, Spring extend

**Accessory**

Nil	None
V	Rod end
W	Double knuckle joint

**Auto switch mounting type**

A	Rail mounting
B	Band mounting

**Number of auto switches**

Nil	2
S	1
n	n

**Auto switch**

Nil	Without auto switch
-----	---------------------

**Mounting bracket**

Nil	None
L	Single foot
M	Double foot
G	Flange
U	Trunnion
N	Clevis

**Applicable mounting bracket**

Action	Head cover type	Mounting bracket				
		L	M	G	U	N
Single acting, Spring return	N	●	●	●	●	●
	E	●	●	●	●	—
	F	●	—	●	●	—
Single acting, Spring extend	Y	●	—	●	●	—
	N	●	●	●	●	●
	E	●	●	●	●	—
	F	●	—	●	●	—

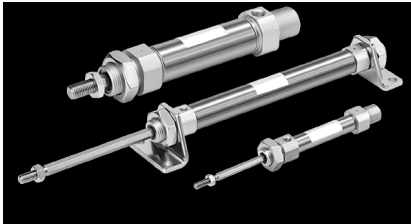
**Made to order**

### Applicable Auto Switches

Type	Special function	Electrical entry	Indicator light	Wiring (Output)	Load voltage		Auto switch model				Lead wire length [m]					Pre-wired connector	Applicable load					
					DC	AC	Band mounting		Rail mounting		0.5 (Nil)	1 (M)	3 (L)	5 (Z)	None (N)							
							Perpendicular	In-line	Perpendicular	In-line												
Solid state auto switch	—	Grommet	—	3-wire (NPN)	5 V, 12 V	—	M9NV	M9N	M9NV	M9N	●	●	●	○	—	○	IC circuit					
				3-wire (PNP)			M9PV	M9P	M9PV	M9P	●	●	●	○	—	○						
		Connector	—	2-wire	12 V	—	—	M9BV	M9B	M9BV	M9B	●	●	●	○	—	○	—				
								—	H7C	J79C	—	●	—	●	●	●	—		—			
	Diagnostic indication (2-color indicator)	Grommet	Yes	24 V	3-wire (NPN)	5 V, 12 V	—	M9NVV	M9NV	M9NVV	M9NV	●	●	●	○	—	○	IC circuit				
					3-wire (PNP)			M9PVV	M9PV	M9PVV	M9PV	●	●	●	○	—	○					
		Water-resistant (2-color indicator)	Grommet	—	2-wire	12 V	—	—	M9BWW	M9BW	M9BWW	M9BW	●	●	●	○	—	○	—			
									3-wire (NPN)	M9NAV	M9NA	M9NAV	M9NA	○	○	●	○	—		○	IC circuit	
			Connector	—	2-wire	12 V	—	—	M9PAV	M9PA	M9PAV	M9PA	○	○	●	○	—	○	—			
									3-wire (PNP)	M9BAV	M9BA	M9BAV	M9BA	○	○	●	○	—		○		
With diagnostic output (2-color indicator)	Grommet	—	4-wire (NPN)	5 V, 12 V	—	—	—	H7NF	—	F79F	●	—	●	○	—	○	IC circuit					
							—	—	—	—	—	—	—	—	—	—						
Reed auto switch	—	Grommet	Yes	3-wire (NPN equivalent)	—	5 V	—	A96V	A96	A96V	A96	●	—	●	—	—	—	IC circuit				
								—	—	—	—	—	—	—	—	—	—					
								—	200 V	—	—	A72	A72H	●	—	●	—		—	—	—	
								—	100 V	A93V	A93	A93V	A93	●	●	●	—		—	—		
		Connector	No	24 V	2-wire	12 V	—	100 V or less	A90V	A90	A90V	A90	●	—	●	—	—	—	IC circuit			
									—	—	C73C	A73C	—	●	—	●	●	—		—		
									—	—	—	C80C	A80C	—	●	—	●	●		—	—	IC circuit
									—	24 V or less	—	—	A79W	—	●	—	●	—		—	—	

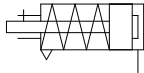


## C85K Series

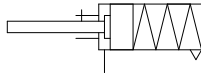


### Symbol

Single acting: Spring return,  
Rubber bumper



Single acting: Spring extend,  
Rubber bumper



### Specifications

Bore size [mm]	8	10	12	16	20	25
Type	Pneumatic					
Action	Single acting, Single rod					
Fluid	Air					
Proof pressure	1.5 MPa					
Max. operating pressure	1.0 MPa					
Min. operating pressure	0.22 MPa	0.18 MPa	0.13 MPa	Return: 0.18 MPa, Extend: 0.23 MPa		
Ambient and fluid temperature	Without auto switch: -20°C to 80°C (No freezing) With auto switch: -10°C to 60°C (No freezing)					
Lubricant	Not required (Non-lube)					
Stroke length tolerance	$^{+1.0}_0$ mm			$^{+1.4}_0$ mm		
Piston speed	50 to 1500 mm/s					
Cushion	Rubber bumper					
Allowable kinetic energy	0.02 J	0.03 J	0.04 J	0.09 J	0.27 J	0.4 J
Non-rotating accuracy	$\pm 1.5^\circ$		$\pm 1^\circ$		$\pm 0.7^\circ$	

### Standard Strokes

Bore size [mm]	Standard stroke [mm] <sup>*1</sup>	Max. stroke [mm]
8	10, 25, 50	50
10		
12		
16		
20	10, 25, 50, 100, 150	150
25		

### Spring Retracting Force

#### Spring Return [N]

Bore size [mm]	Standard stroke [mm]	Spring force									
		10		25		50		100		150	
		Rod extended	Rod retracted	Rod extended	Rod retracted	Rod extended	Rod retracted	Rod extended	Rod retracted	Rod extended	Rod retracted
8	10, 25, 50	4.4	4.0	4.4	3.4	4.4	2.5	—	—	—	—
10		6.3	5.7	6.3	4.9	6.3	3.5	—	—	—	—
12		7.2	6.6	7.2	5.8	7.2	4.4	—	—	—	—
16	10, 25, 50, 100, 150	13.2	12.1	13.2	10.3	13.2	7.5	13.2	7.5	13.2	7.5
20		21.6	18.6	21.6	16.7	21.6	11.8	39.2	9.8	39.2	9.8
25		27.5	25.3	27.5	22.1	27.5	16.7	47.1	13.7	47.1	15.7

#### Spring Extend [N]

Bore size [mm]	Standard stroke [mm]	Spring force									
		10		25		50		100		150	
		Rod retracted	Rod extended	Rod retracted	Rod extended	Rod retracted	Rod extended	Rod retracted	Rod extended	Rod retracted	Rod extended
8	10, 25, 50	5.3	3.9	5.3	3.1	5.3	2.7	—	—	—	—
10		6.0	4.8	6.0	4.0	6.0	3.5	—	—	—	—
12		6.6	5.6	6.6	4.9	6.6	4.5	—	—	—	—
16	10, 25, 50, 100, 150	14.7	11.3	14.7	9.2	14.7	7.9	14.7	7.9	14.7	7.9
20		39.2	33.0	39.2	23.5	39.2	9.8	39.2	9.8	39.2	9.8
25		47.1	40.4	47.1	30.4	47.1	13.7	47.1	13.7	47.1	15.7

## ⚠ Precautions

### ⚠ Caution

1. Avoid using the air cylinder in such a way that rotational torque would be applied to the piston rod.

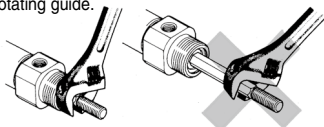
If rotational torque is applied, the non-rotating guide will become deformed, thus affecting the non-rotating accuracy.

Refer to the table below for the approximate values of the allowable range of rotational torque.

Allowable rotational torque (N-m or less)	ø8	ø10	ø12	ø16	ø20	ø25
	0.02	0.04	0.2	0.25		

To screw a bracket or a nut onto the threaded portion at the tip of the piston rod, make sure to retract the piston rod entirely, and place a wrench over the flat portion of the rod that protrudes.

Tighten it by giving consideration to prevent the tightening torque from being applied to the non-rotating guide.





**ISO Standards** Air Cylinder: Non-rotating Rod  
Single Acting, Spring Return/Extend **C85K Series**

## Mounting Brackets/Accessories

Mounting bracket/ Accessory	Standard (mounted to the body)		Mounting bracket (shipped together)								Accessory (shipped together)	
	Mounting nut	Rod end nut	Mounting nut	Foot	Flange	Trunnion	Clevis pivot bracket	Clevis pin	Pin retaining ring	Rod end	Double knuckle joint	
Mounting bracket symbol	<b>L</b> Single foot	● (1 pc.)	● (1 pc.)	—	● (1 pc.)	—	—	—	—	—	—	—
	<b>M</b> Double foot	● (1 pc.)	● (1 pc.)	● (1 pc.)	● (2 pcs.)	—	—	—	—	—	—	—
	<b>G</b> Flange	● (1 pc.)	● (1 pc.)	—	—	● (1 pc.)	—	—	—	—	—	—
	<b>U</b> Trunnion	● (1 pc.)	● (1 pc.)	—	—	—	● (1 pc.)	—	—	—	—	—
	<b>N</b> Clevis	● (1 pc.)	● (1 pc.)	—	—	—	—	● (1 pc.)	● (1 pc.)	● (2 pcs.)	—	—
Accessory symbol	<b>V</b> Rod end	● (1 pc.)	● (1 pc.)	—	—	—	—	—	—	—	● (1 pc.)	—
	<b>W</b> Double knuckle joint	● (1 pc.)	● (1 pc.)	—	—	—	—	—	—	—	—	● (1 pc.)

## Mounting Bracket/Accessory Part Nos.

Mounting bracket/Accessory	Bore size [mm]					Contents
	8	10	12	16	20	
Mounting bracket	Rod end nut	C85NT10	C85NT16	C85NT20	C85NT25	1 rod end nut
	Mounting nut	C85SN10	C85SN16	C85SN25		1 mounting nut
	Foot (1 pc.)	C85L10A	C85L16A	C85L25A		1 foot bracket
	Foot (2 pcs. with 1 mounting nut)	C85L10B	C85L16B	C85L25B		2 foot brackets, 1 mounting nut
	Foot (1 pc. with 1 mounting nut)	C85L10C	C85L16C	C85L25C		1 foot bracket, 1 mounting nut
	Flange	C85F10	C85F16	C85F25		1 flange
	Trunnion	C85T10	C85T16	C85T25		1 trunnion
	Clevis	C85C10	C85C16	C85C25		1 clevis pivot bracket, 1 clevis pin, 2 pin retaining rings
Accessory	Rod end	KJ4D	KJ6D	KJ8D	KJ10D	1 rod end
	Double knuckle joint	GKM4-8	GKM6-12	GKM8-16	GKM10-20	1 double knuckle joint
	Floating joint	JA10-4-070	JA15-6-100	JA20-8-125	JA30-10-125	1 floating joint

## Replacement Parts: For Non-rotating Rod Type (K) (Only for single acting, spring extend)

Bore size [mm]	Part no.	Note
20	C85K-20PS	Every set includes: 1 rod seal 1 flat washer 1 retaining ring
25	C85K-25PS	

\* When replacing the seals, use **grease (GR-S-010: ordered separately)** on the sliding parts.  
In the single acting, spring return type, there is no rod seal so it is not possible to replace any seals.





## C85K Series

### Weights

#### Single Acting, Spring Return (S)

[g]

		Bore size [mm]	8	10	12	16	20	25	
Basic weight	Without magnet	1 to 50 mm stroke	C85KN□-□S	42	47	92	116	228	309
			C85KE□-□S	44	49	95	120	233	314
			C85KF□-□S	40	46	86	106	213	292
			C85KY□-□S	41	46	86	107	214	293
		51 to 100 mm stroke	C85KN□-□S	—	—	—	154	264	361
			C85KE□-□S	—	—	—	157	269	366
			C85KF□-□S	—	—	—	144	249	344
			C85KY□-□S	—	—	—	144	250	345
			101 to 150 mm stroke	C85KN□-□S	—	—	—	191	302
	C85KE□-□S	—		—	—	194	307	420	
	C85KF□-□S	—		—	—	181	287	397	
	C85KY□-□S	—		—	—	181	287	398	
	With magnet	1 to 50 mm stroke		CD85KN□-□S	44	49	94	120	231
			CD85KE□-□S	46	51	98	124	237	318
			CD85KF□-□S	43	48	89	110	216	296
			CD85KY□-□S	43	48	89	110	217	297
		51 to 100 mm stroke	CD85KN□-□S	—	—	—	158	268	365
			CD85KE□-□S	—	—	—	161	273	370
CD85KF□-□S			—	—	—	148	252	348	
CD85KY□-□S			—	—	—	148	253	349	
101 to 150 mm stroke			CD85KN□-□S	—	—	—	195	305	418
	CD85KE□-□S	—	—	—	198	310	423		
	CD85KF□-□S	—	—	—	185	290	401		
	CD85KY□-□S	—	—	—	185	291	402		
	Additional weight per 10 mm of stroke			2.3	2.5	4.5	5.5	8.7	12.2
Mounting bracket	Foot (1 pc.)	C85L□A	20		40		95		
	Foot (2 pcs. with 1 mounting nut)	C85L□B	55		105		210		
	Flange	C85F□	12		25		90		
	Trunnion	C85T□	20		50		75		
	Clevis	C85C□	20		40		85		
Accessory	Rod end	KJ□D	17		25		45 70		
	Double knuckle joint	GKM□-□	10		20		50 100		
	Floating joint	JA□-□-□	10		20		50 70		

#### Single Acting, Spring Extend (T)

[g]

		Bore size [mm]	8	10	12	16	20	25	
Basic weight	Without magnet	1 to 50 mm stroke	C85KN□-□T	43	49	93	119	214	285
			C85KE□-□T	45	51	96	123	218	290
			C85KF□-□T	42	47	87	109	199	268
		51 to 100 mm stroke	C85KN□-□T	—	—	—	149	238	319
			C85KE□-□T	—	—	—	153	243	324
			C85KF□-□T	—	—	—	140	223	302
			C85KN□-□T	—	—	—	180	265	355
			C85KE□-□T	—	—	—	184	269	360
			C85KF□-□T	—	—	—	170	249	338
	With magnet	1 to 50 mm stroke	CD85KN□-□T	46	51	96	123	217	289
			CD85KE□-□T	48	53	99	127	222	294
			CD85KF□-□T	44	49	90	113	202	272
		51 to 100 mm stroke	CD85KN□-□T	—	—	—	154	242	323
			CD85KE□-□T	—	—	—	157	247	328
			CD85KF□-□T	—	—	—	144	227	306
			CD85KN□-□T	—	—	—	184	268	359
			CD85KE□-□T	—	—	—	188	273	364
			CD85KF□-□T	—	—	—	174	253	341
Additional weight per 10 mm of stroke			2.3	2.5	4.5	5.5	8.7	12.2	
Mounting bracket	Foot (1 pc.)	C85L□A	20		40		95		
	Foot (2 pcs. with 1 mounting nut)	C85L□B	55		105		210		
	Flange	C85F□	12		25		90		
	Trunnion	C85T□	20		50		75		
	Clevis	C85C□	20		40		85		
Accessory	Rod end	KJ□D	17		25		45 70		
	Double knuckle joint	GKM□-□	10		20		50 100		
	Floating joint	JA□-□-□	10		20		50 70		

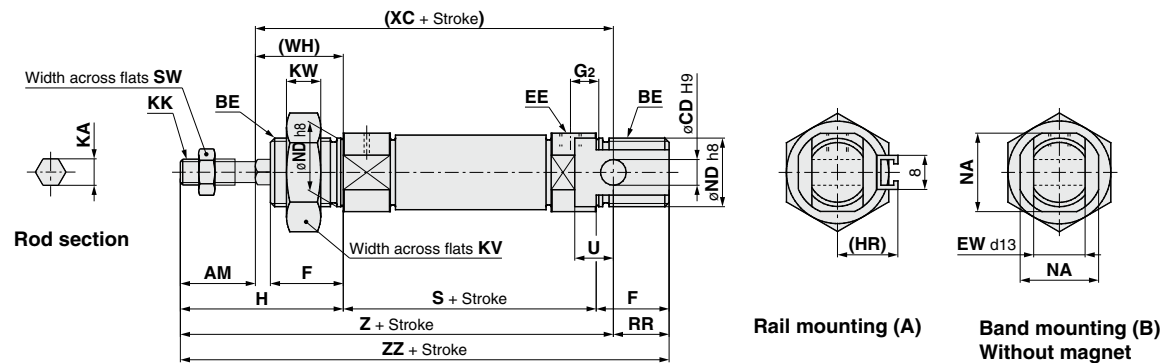


ISO Standards Air Cylinder: Non-rotating Rod  
Single Acting, Spring Return/Extend **C85K Series**

## Dimensions: Single Acting, Spring Return

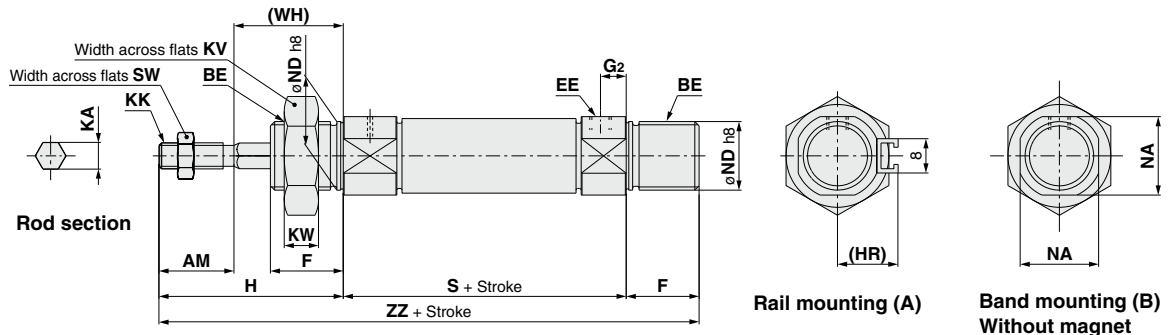
Basic (Integrated clevis)

C□85KN Bore size - Stroke S - □



Double end boss-cut

C□85KE Bore size - Stroke S - □



## Dimensions

[mm]

Bore size	AM	BE	CD	EE	EW	F	G <sub>2</sub>	H	(HR)	KA	KK	KV	KW	NA	ND	RR	SW	U	(WH)
8	12	M12 x 1.25	4	M5 x 0.8	8	12	5	28	13.4	4.2	M4 x 0.7	19	6	15	12	10	7	6	16
10	12	M12 x 1.25	4	M5 x 0.8	8	12	5	28	14.2	4.2	M4 x 0.7	19	6	15	12	10	7	6	16
12	16	M16 x 1.5	6	M5 x 0.8	12	17	6	38	14.2	6.2	M6 x 1	24	8	18.3	16	14	10	9	22
16	16	M16 x 1.5	6	M5 x 0.8	12	17	6	38	14.2	6.2	M6 x 1	24	8	18.3	16	13	10	9	22
20	20	M22 x 1.5	8	G1/8	16	20	8	44	17	8.2	M8 x 1.25	32	11	24	22	11	13	12	24
25	22	M22 x 1.5	8	G1/8	16	22	8	50	20	10.2	M10 x 1.25	32	11	30	22	11	17	12	28

Bore size	S			(XC)			Z			ZZ		
	1 to 50	51 to 100	101 to 150	1 to 50	51 to 100	101 to 150	1 to 50	51 to 100	101 to 150	1 to 50	51 to 100	101 to 150
8	56 (62)	—	—	74 (80)	—	—	86 (92)	—	—	96 (102)	—	—
10	56 (60)	—	—	74 (78)	—	—	86 (90)	—	—	96 (100)	—	—
12	60 (63.5)	—	—	85 (88.5)	—	—	101 (104.5)	—	—	115 (118.5)	—	—
16	66 (69.5)	92 (95.5)	118 (121.5)	92 (95.5)	118 (121.5)	144 (147.5)	108 (111.5)	134 (137.5)	160 (163.5)	121 (124.5)	147 (150.5)	173 (176.5)
20	87	112	137	120	145	170	140	165	190	151	176	201
25	88.5	113.5	138.5	127.5	152.5	177.5	149.5	174.5	199.5	160.5	185.5	210.5

( ): For built-in magnet

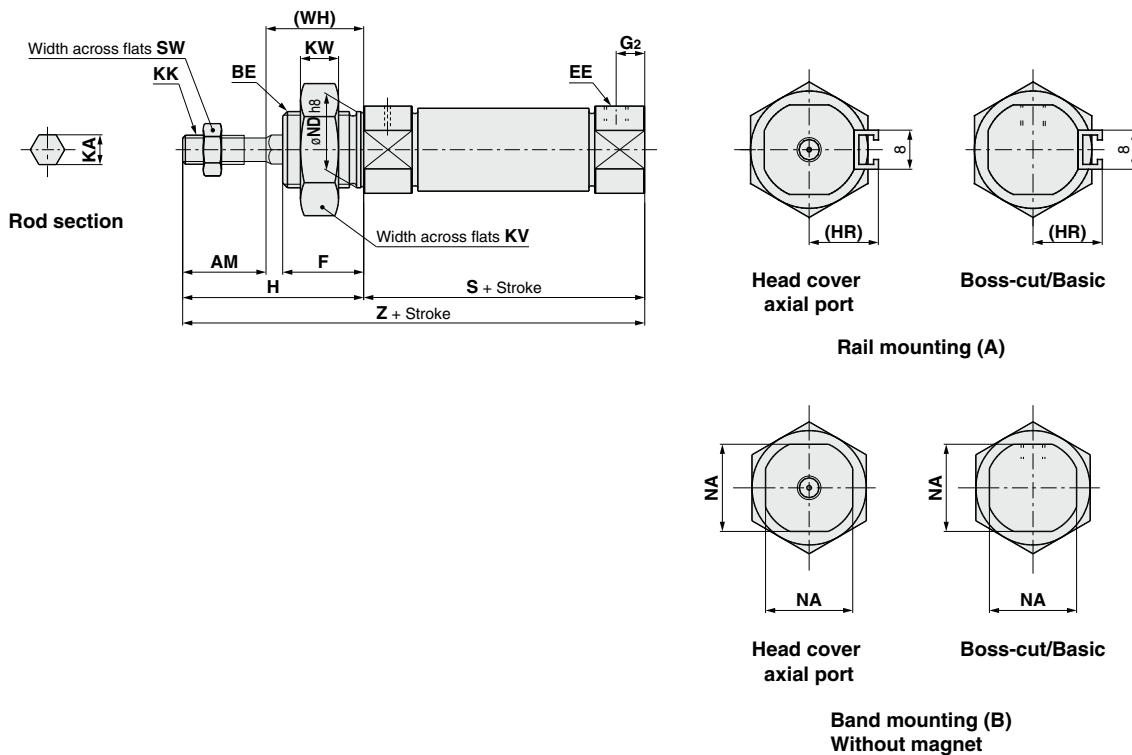


## C85K Series

### Dimensions: Single Acting, Spring Return

Boss-cut/Basic, Head cover axial port

C□85KF/Y Bore size – Stroke S – □



### Dimensions

[mm]

Bore size	AM	BE	EE	F	G <sub>2</sub>	H	(HR)	KA	KK	KV	KW	NA	ND	SW	(WH)
8	12	M12 x 1.25	M5 x 0.8	12	5	28	13.4	4.2	M4 x 0.7	19	6	15	12	7	16
10	12	M12 x 1.25	M5 x 0.8	12	5	28	14.2	4.2	M4 x 0.7	19	6	15	12	7	16
12	16	M16 x 1.5	M5 x 0.8	17	6	38	14.2	6.2	M6 x 1	24	8	18.3	16	10	22
16	16	M16 x 1.5	M5 x 0.8	17	6	38	14.2	6.2	M6 x 1	24	8	18.3	16	10	22
20	20	M22 x 1.5	G1/8	20	8	44	17	8.2	M8 x 1.25	32	11	24	22	13	24
25	22	M22 x 1.5	G1/8	22	8	50	20	10.2	M10 x 1.25	32	11	30	22	17	28

Bore size	S			Z		
	1 to 50	51 to 100	101 to 150	1 to 50	51 to 100	101 to 150
8	56 (62)	—	—	84 (90)	—	—
10	56 (60)	—	—	84 (88)	—	—
12	60 (63.5)	—	—	98 (101.5)	—	—
16	60 (63.5)	86 (89.5)	112 (115.5)	98 (101.5)	124 (127.5)	150 (153.5)
20	87	112	137	131	156	181
25	88.5	113.5	138.5	138.5	163.5	188.5

( ): For built-in magnet

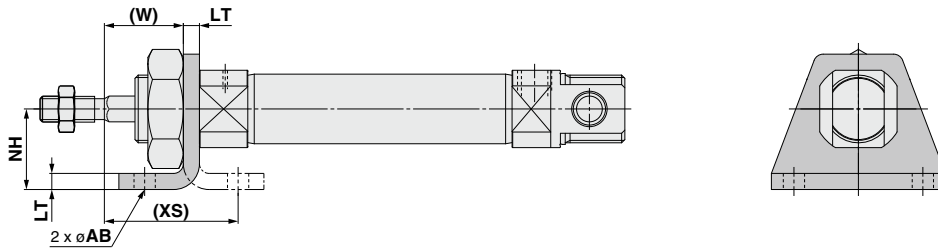


ISO Standards Air Cylinder: Non-rotating Rod  
Single Acting, Spring Return/Extend **C85K Series**

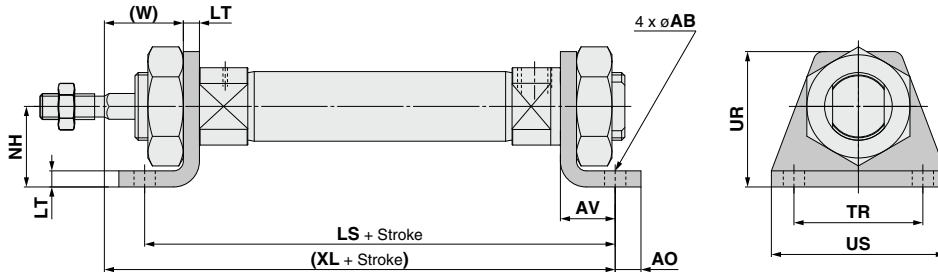
**Dimensions: Single Acting, Spring Return**

Bracket is shipped together with the product.

Single foot: C□85KN□-□SL  
(With mounting bracket)



Double foot: C□85KN□-□SM  
(With mounting bracket)



Bore size	AB	AO	AV	LS			LT	NH	TR <sub>Js14</sub>	UR	US	(W)	(XL)			(XS)
				1 to 50	51 to 100	101 to 150							1 to 50	51 to 100	101 to 150	
				<b>8</b>	4.5	5							11	78 (84)	—	
<b>10</b>	4.5	5	11	78 (82)	—	—	3.2	16	25	26	35	12.8	83 (87)	—	—	23.8
<b>12</b>	5.5	6	14	88 (91.5)	—	—	4	20	32	33	42	18	96 (99.5)	—	—	32
<b>16</b>	5.5	6	14	94 (97.5)	120 (123.5)	146 (149.5)	4	20	32	33	42	18	102 (105.5)	128 (131.5)	154 (157.5)	32
<b>20</b>	6.6	8	17	121	146	171	5	25	40	42	54	19	128	153	178	36
<b>25</b>	6.6	8	17	122.5	147.5	172.5	5	25	40	42	54	23	133.5	158.5	183.5	40

( ): For built-in magnet

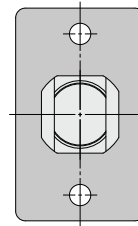
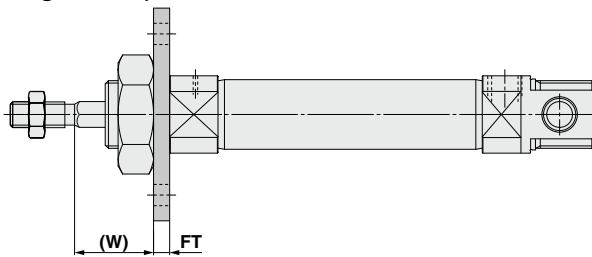


## C85K Series

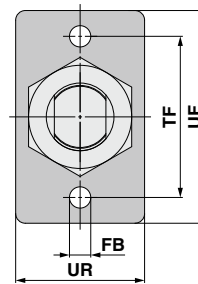
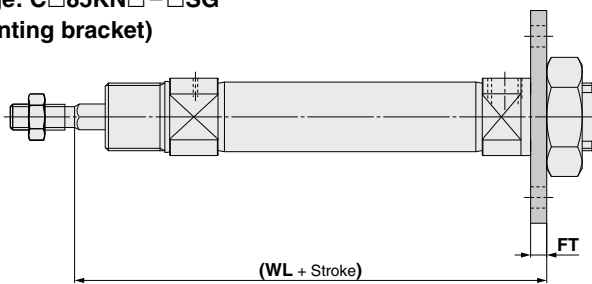
### Dimensions: Single Acting, Spring Return

Bracket is shipped together with the product.

Rod flange: C□85KN□-□SG  
(With mounting bracket)



Head flange: C□85KN□-□SG  
(With mounting bracket)



Bore size	FB <sub>H13</sub>	FT	TF	UF	UR	(W)	[mm]		
							(WL)		
							1 to 50	51 to 100	101 to 150
<b>8</b>	4.5	3.2	30	40	22	12.8	75.2 (81.2)	—	—
<b>10</b>	4.5	3.2	30	40	22	12.8	75.2 (79.2)	—	—
<b>12</b>	5.5	4	40	52	30	18	86 (89.5)	—	—
<b>16</b>	5.5	4	40	52	30	18	92 (95.5)	118 (121.5)	144 (147.5)
<b>20</b>	6.6	5	50	66	40	19	116	141	166
<b>25</b>	6.6	5	50	66	40	23	121.5	146.5	171.5

( ): For built-in magnet

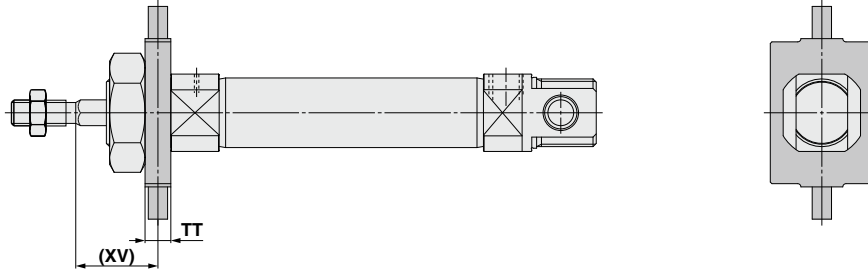


ISO Standards Air Cylinder: Non-rotating Rod  
Single Acting, Spring Return/Extend **C85K Series**

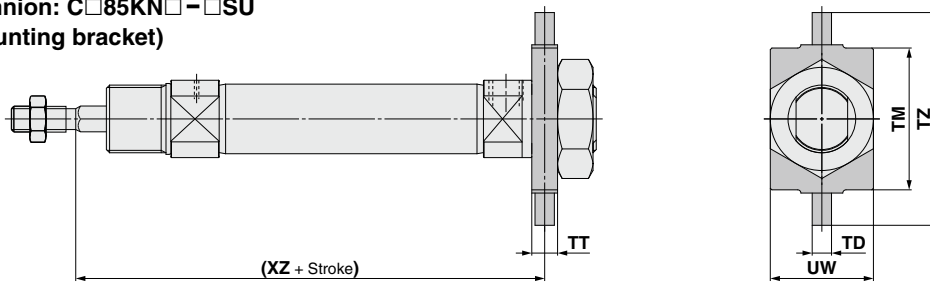
**Dimensions: Single Acting, Spring Return**

Bracket is shipped together with the product.

Rod trunnion: C□85KN□ - □SU (With mounting bracket)



Head trunnion: C□85KN□ - □SU  
(With mounting bracket)

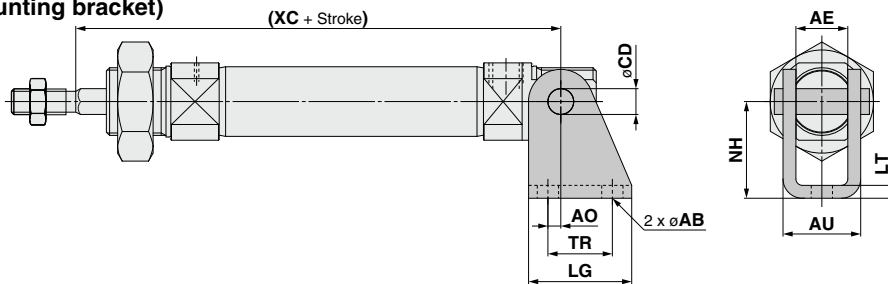


[mm]

Bore size	TD <sub>e8</sub>	TM	TT	TZ	UW	(XV)	(XZ)		
							1 to 50	51 to 100	101 to 150
8	4	26	6	38	20	13	75 (81)	—	—
10	4	26	6	38	20	13	75 (79)	—	—
12	6	38	8	58	25	18	86 (89.5)	—	—
16	6	38	8	58	25	18	92 (95.5)	118 (121.5)	144 (147.5)
20	6	46	8	66	32	20	115	140	165
25	6	46	8	66	32	24	120.5	145.5	170.5

( ) : For built-in magnet

Clevis: C□85KN□ - □SN  
(With mounting bracket)



[mm]

Bore size	AB	AE	AO	AU	CD <sub>H9</sub>	LG	LT	NH	TR	(XC)		
										1 to 50	51 to 100	101 to 150
8	4.5	8.1	1.5	13.1	4	20	2.5	24	12.5	74 (80)	—	—
10	4.5	8.1	1.5	13.1	4	20	2.5	24	12.5	74 (78)	—	—
12	5.5	12.1	2	18.5	6	25	3.2	27	15	85 (88.5)	—	—
16	5.5	12.1	2	18.5	6	25	3.2	27	15	92 (95.5)	118 (121.5)	144 (147.5)
20	6.6	16.1	4	24.1	8	32	4	30	20	120	145	170
25	6.6	16.1	4	24.1	8	32	4	30	20	127.5	152.5	177.5

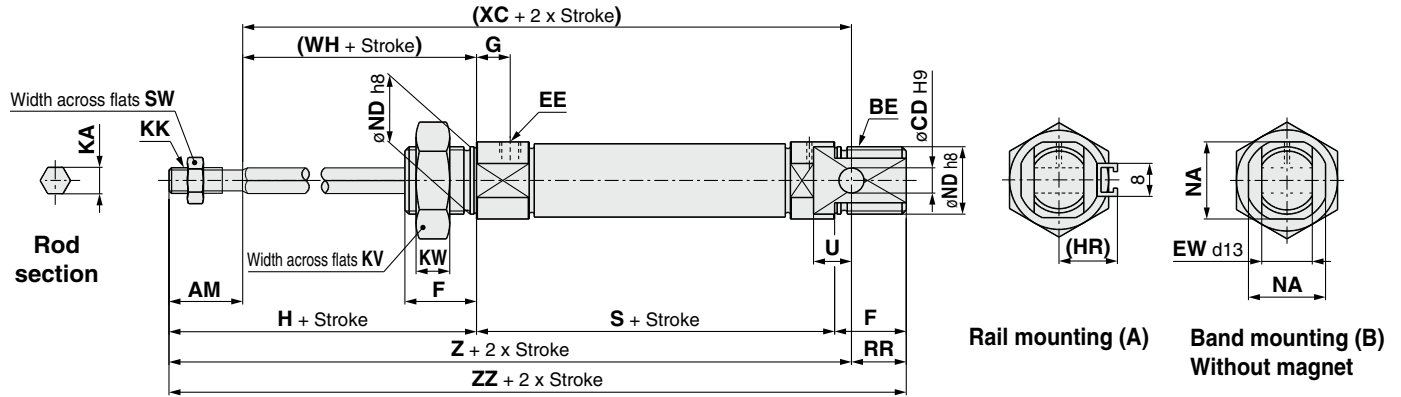
( ) : For built-in magnet

# C85K Series

## Dimensions: Single Acting, Spring Extend

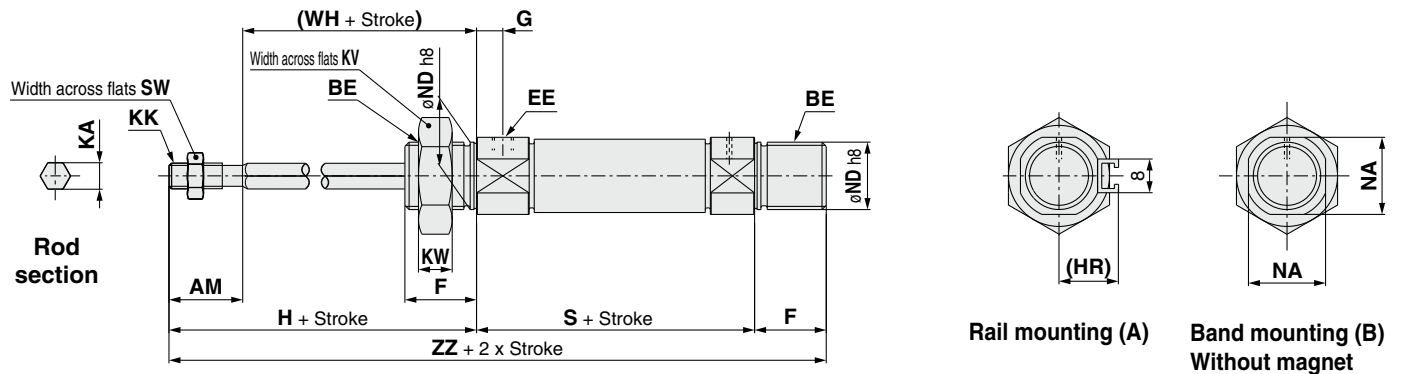
### Basic (Integrated clevis)

C□85KN Bore size - Stroke T - □



### Double end boss-cut

C□85KE Bore size - Stroke T - □



## Dimensions

[mm]

Bore size	AM	BE	CD	EE	EW	F	G	H	(HR)	KA	KK	KV	KW	NA	ND	RR	SW	U	(WH)
8	12	M12 x 1.25	4	M5 x 0.8	8	12	7	28	13.4	4.2	M4 x 0.7	19	6	15	12	10	7	6	16
10	12	M12 x 1.25	4	M5 x 0.8	8	12	7	28	14.2	4.2	M4 x 0.7	19	6	15	12	10	7	6	16
12	16	M16 x 1.5	6	M5 x 0.8	12	17	8	38	14.2	6.2	M6 x 1	24	8	18.3	16	14	10	9	22
16	16	M16 x 1.5	6	M5 x 0.8	12	17	8	38	14.2	6.2	M6 x 1	24	8	18.3	16	13	10	9	22
20	20	M22 x 1.5	8	G1/8	16	20	8	44	17	8.2	M8 x 1.25	32	11	24	22	11	13	12	24
25	22	M22 x 1.5	8	G1/8	16	22	8	50	20	10.2	M10 x 1.25	32	11	30	22	11	17	12	28

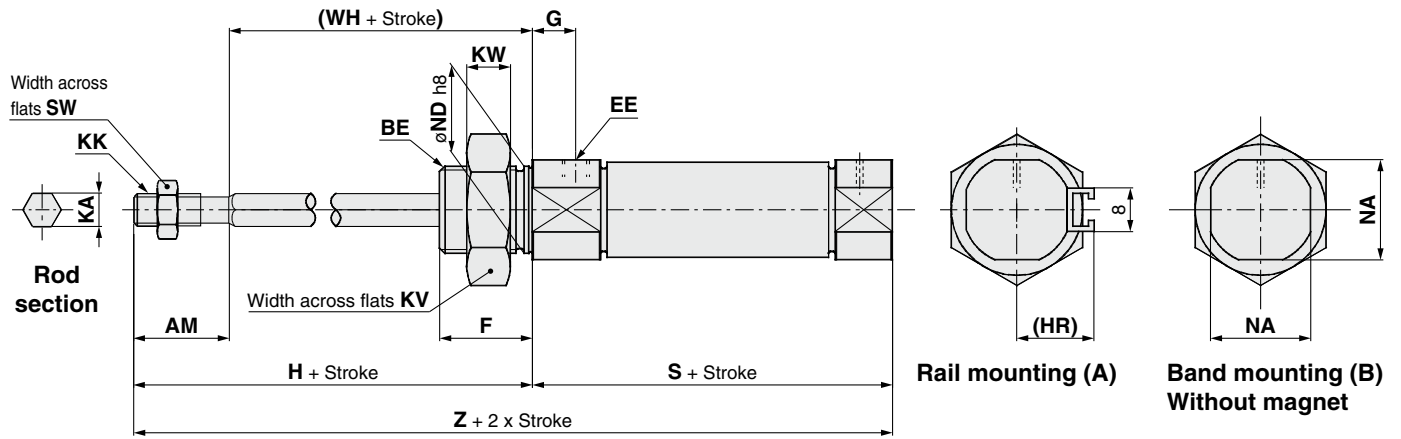
Bore size	S			(XC)			Z			ZZ		
	1 to 50	51 to 100	101 to 150	1 to 50	51 to 100	101 to 150	1 to 50	51 to 100	101 to 150	1 to 50	51 to 100	101 to 150
8	64.5 (70.5)	—	—	82.5 (88.5)	—	—	94.5 (100.5)	—	—	104.5 (110.5)	—	—
10	64.5 (68.5)	—	—	82.5 (86.5)	—	—	94.5 (98.5)	—	—	104.5 (108.5)	—	—
12	70 (73.5)	—	—	95 (98.5)	—	—	111 (114.5)	—	—	125 (128.5)	—	—
16	75 (78.5)	101 (104.5)	127 (130.5)	101 (104.5)	127 (130.5)	153 (156.5)	117 (120.5)	143 (146.5)	169 (172.5)	130 (133.5)	156 (159.5)	182 (185.5)
20	87	112	137	120	145	170	140	165	190	151	176	201
25	88.5	113.5	138.5	127.5	152.5	177.5	149.5	174.5	199.5	160.5	185.5	210.5

( ): For built-in magnet

## Dimensions: Single Acting, Spring Extend

### Boss-cut/Basic

C□85KF Bore size – Stroke T – □



### Dimensions

Bore size	AM	BE	EE	F	G	H	(HR)	KA	KK	KV	KW	NA	ND	SW	(WH)
8	12	M12 x 1.25	M5 x 0.8	12	7	28	13.4	4.2	M4 x 0.7	19	6	15	12	7	16
10	12	M12 x 1.25	M5 x 0.8	12	7	28	14.2	4.2	M4 x 0.7	19	6	15	12	7	16
12	16	M16 x 1.5	M5 x 0.8	17	8	38	14.2	6.2	M6 x 1	24	8	18.3	16	10	22
16	16	M16 x 1.5	M5 x 0.8	17	8	38	14.2	6.2	M6 x 1	24	8	18.3	16	10	22
20	20	M22 x 1.5	G1/8	20	8	44	17	8.2	M8 x 1.25	32	11	24	22	13	24
25	20	M22 x 1.5	G1/8	22	8	50	20	10.2	M10 x 1.25	32	11	30	22	17	28

Bore size	S			Z		
	1 to 50	51 to 100	101 to 150	1 to 50	51 to 100	101 to 150
8	64.5 (70.5)	—	—	92.5 (98.5)	—	—
10	64.5 (68.5)	—	—	92.5 (96.5)	—	—
12	70 (73.5)	—	—	108 (111.5)	—	—
16	69 (72.5)	95 (98.5)	121 (124.5)	107 (110.5)	133 (136.5)	159 (162.5)
20	87	112	137	131	156	181
25	88.5	113.5	138.5	138.5	163.5	188.5

( ): For built-in magnet



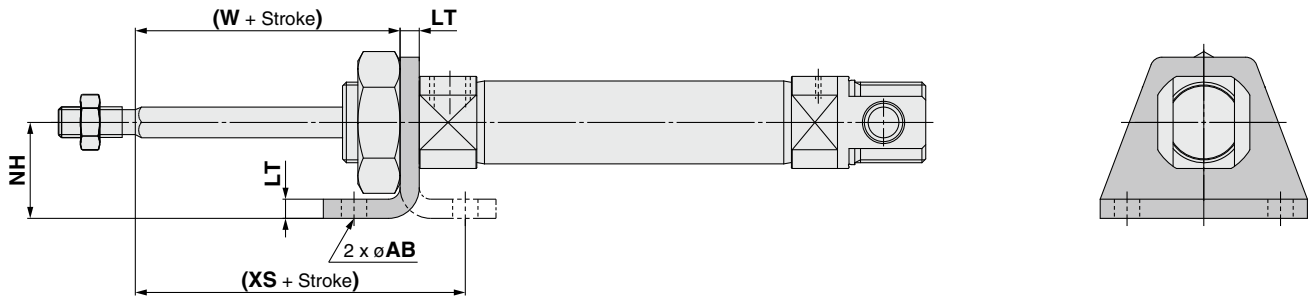
# C85K Series

## Dimensions: Single Acting, Spring Extend

Bracket is shipped together with the product.

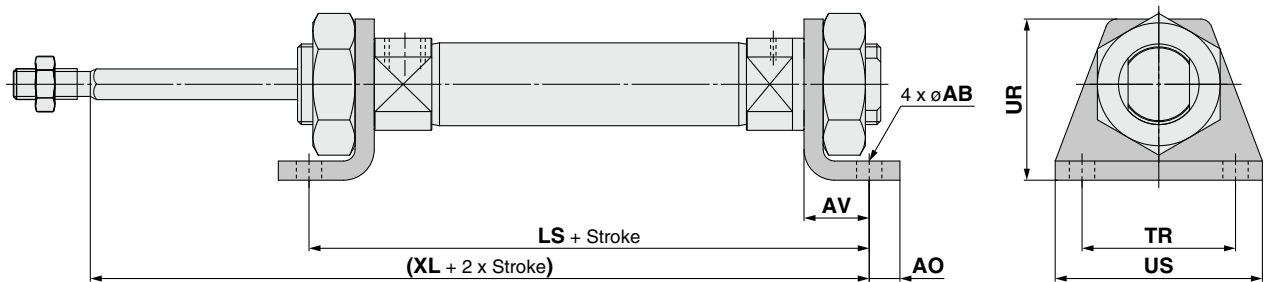
Single foot: C□85KN□ - □TL

(With mounting bracket)



Double foot: C□85KN□ - □TM

(With mounting bracket)



[mm]

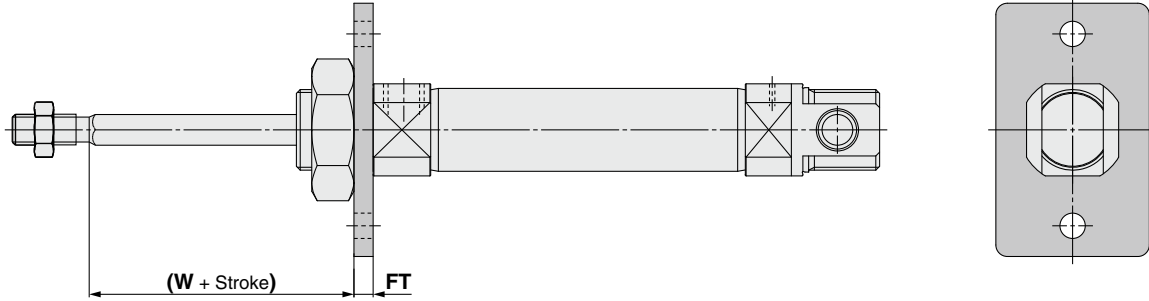
Bore size	AB	AO	AV	LS			LT	NH	TR <sub>Js14</sub>	UR	US	(W)	(XS)	(XL)		
				1 to 50	51 to 100	101 to 150								1 to 50	51 to 100	101 to 150
8	4.5	5	11	86.5 (92.5)	—	—	3.2	16	25	26	35	12.8	23.8	91.5 (97.5)	—	—
10	4.5	5	11	86.5 (90.5)	—	—	3.2	16	25	26	35	12.8	23.8	91.5 (95.5)	—	—
12	5.5	6	14	98 (101.5)	—	—	4	20	32	33	42	18	32	106 (109.5)	—	—
16	5.5	6	14	103 (106.5)	129 (132.5)	155 (158.5)	4	20	32	33	42	18	32	111 (114.5)	137 (140.5)	163 (166.5)
20	6.6	8	17	121	146	171	5	25	40	42	54	19	36	128	153	178
25	6.6	8	17	122.5	147.5	172.5	5	25	40	42	54	23	40	133.5	158.5	183.5

( ): For built-in magnet

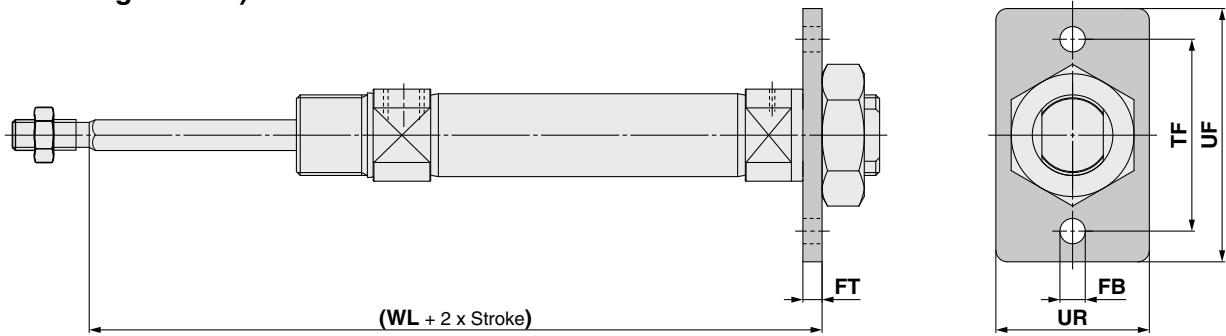
**Dimensions: Single Acting, Spring Extend**

Bracket is shipped together with the product.

Rod flange: C□85KN□ - □TG  
(With mounting bracket)



Head flange: C□85KN□ - □TG  
(With mounting bracket)



[mm]

Bore size	FB <sub>H13</sub>	FT	TF	UF	UR	(W)	(WL)		
							1 to 50	51 to 100	101 to 150
<b>8</b>	4.5	3.2	30	40	22	12.8	83.7 (89.7)	—	—
<b>10</b>	4.5	3.2	30	40	22	12.8	83.7 (87.7)	—	—
<b>12</b>	5.5	4	40	52	30	18	96 (99.5)	—	—
<b>16</b>	5.5	4	40	52	30	18	101 (104.5)	127 (130.5)	153 (156.5)
<b>20</b>	6.6	5	50	66	40	19	116	141	166
<b>25</b>	6.6	5	50	66	40	23	121.5	146.5	171.5

( ): For built-in magnet

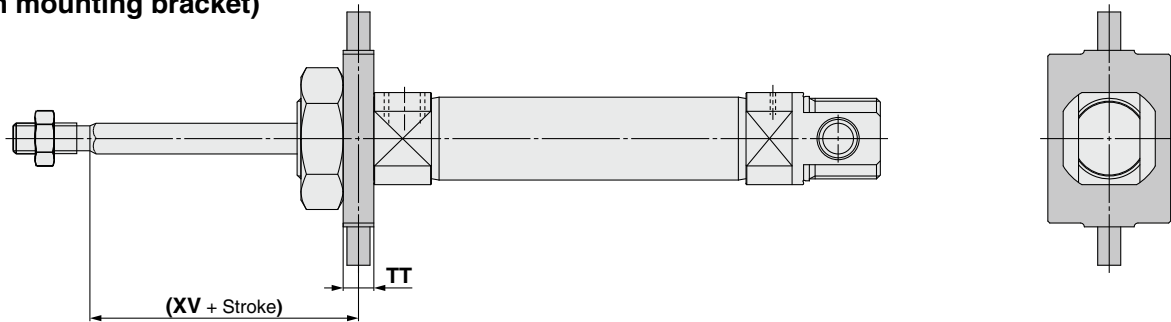
# C85K Series

## Dimensions: Single Acting, Spring Extend

Bracket is shipped together with the product.

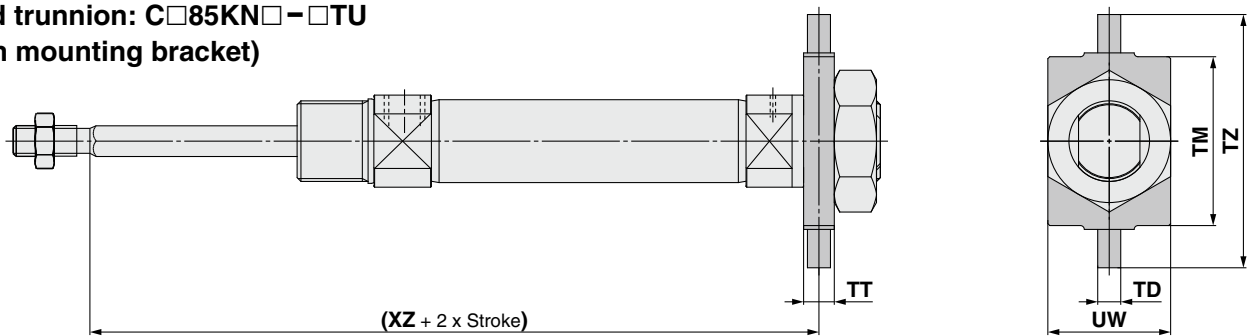
### Rod trunnion: C□85KN□-□TU

(With mounting bracket)



### Head trunnion: C□85KN□-□TU

(With mounting bracket)



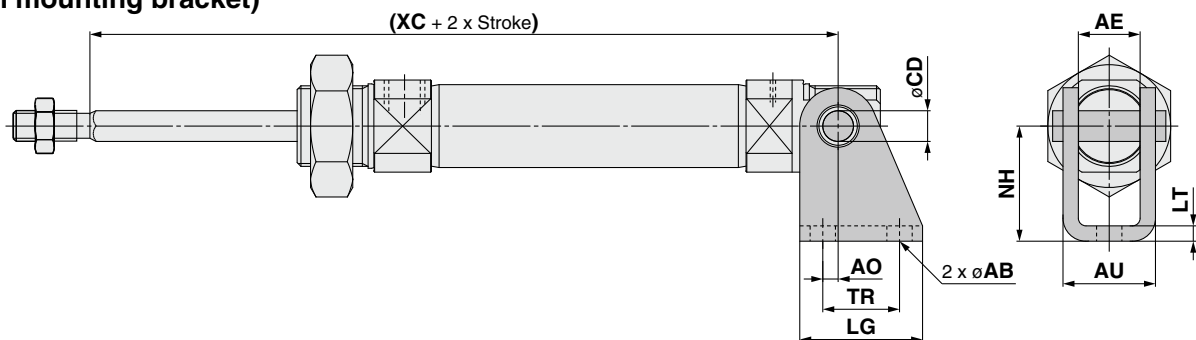
[mm]

Bore size	TD <sub>e8</sub>	TM	TT	TZ	UW	(XV)	(XZ)		
							1 to 50	51 to 100	101 to 150
8	4	26	6	38	20	13	83.5 (89.5)	—	—
10	4	26	6	38	20	13	83.5 (87.5)	—	—
12	6	38	8	58	25	18	96 (99.5)	—	—
16	6	38	8	58	25	18	101 (104.5)	127 (130.5)	153 (156.5)
20	6	46	8	66	32	20	115	140	165
25	6	46	8	66	32	24	120.5	145.5	170.5

( ) : For built-in magnet

### Clevis: C□85KN□-□TN

(With mounting bracket)



[mm]

Bore size	AB	AE	AO	AU	CD <sub>H9</sub>	LG	LT	NH	TR	(XC)		
										1 to 50	51 to 100	101 to 150
8	4.5	8.1	1.5	13.1	4	20	2.5	24	12.5	82.5 (88.5)	—	—
10	4.5	8.1	1.5	13.1	4	20	2.5	24	12.5	82.5 (86.5)	—	—
12	5.5	12.1	2	18.5	6	25	3.2	27	15	95 (98.5)	—	—
16	5.5	12.1	2	18.5	6	25	3.2	27	15	101 (104.5)	127 (130.5)	153 (156.5)
20	6.6	16.1	4	24.1	8	32	4	30	20	120	145	170
25	6.6	16.1	4	24.1	8	32	4	30	20	127.5	152.5	177.5

( ) : For built-in magnet